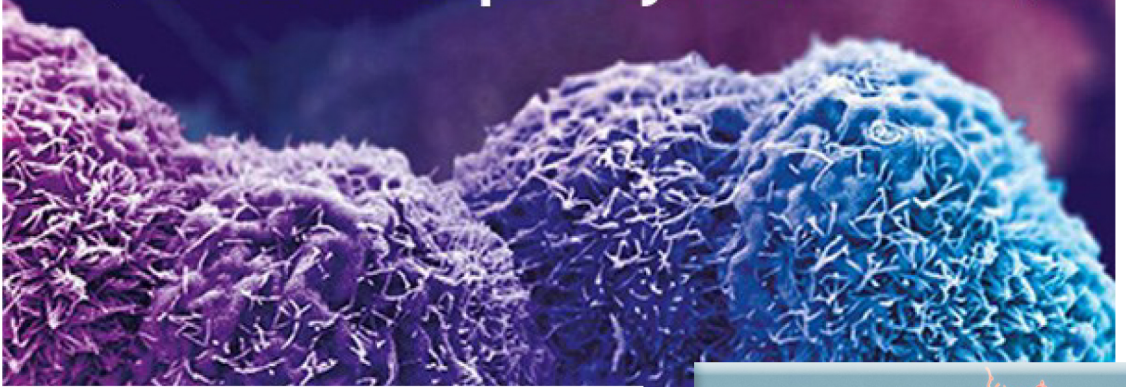
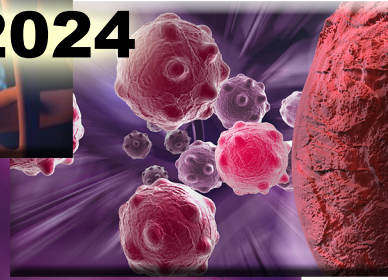


Frequencies for Cancer

Compiled on
November 15th 2024

CANCER Frequency List



Adenocarcinoma

Possible cancer locations

Esophagus

Lungs

Stomach

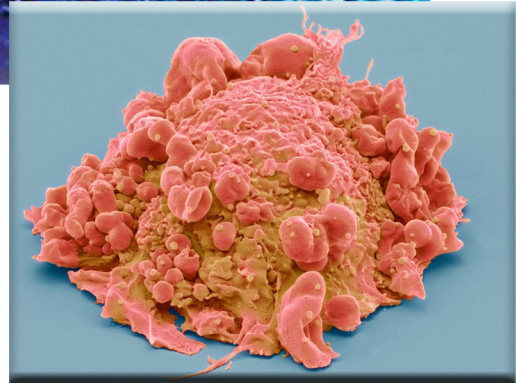
Breast

Pancreas

Colon/
rectum

Gland cells

Cancer cells



For Usage with the
**Orgo-Life® Quantum Energy
Medbed Technology®**

This list is a compilation of frequencies from Rife frequency researchers. Here you will find the largest Rife frequency database in the world. You can experiment with these frequencies and see if they work for you. If a frequency program makes you uncomfortable, stop using it until you feel better. Please note that these frequencies are for experimentation and entertainment purposes only. Please let us know which frequencies have helped you overcome your Health ailments (energy health issues).

Health ailments (not allowed to use the word: Problems). Happy Rifing with your Orgo-Life® MedBed, we have the largest Rife frequency database in the world. It has 16 SUB-databases including **BP, DNA, MW PROV CAFL, KHZ or BIO, etc...**

Most people wonder what these abbreviations mean. Here is a description of each of them:

ALT is an Alternative collection of frequency series from Ayurvedic knowledge and practices, Solfeggio, planetary vibrations and dowsing. (**UL-6000 thru UL-6-1- from Orgo-Life®**)

BFB for BioFeedBack (**OH-5552 machine from Magickey Teknik ®**) contains frequencies from the body's retroactive responses (biofeedback)

BIO is based on Russian frequency research and offers excellent results.

CALF is the Consolidated Annotated Frequency List, collected over time by RIFE experimenters. This database has not changed since 2006.

CUST for custom, is your personal database. It also contains programs specific to the MedBed Orgo-Life® (after the Orgo-Life® course and on your computer) that are worth exploring.

DNA, gives frequencies deduced from the length of a DNA chain.

ETDFL is the Electro Therapy Device Frequency List. This database is the continuation of the CALE database.

HC contains frequencies from the work of Dr. Hulda Clark. (**Quantum Zapper UL-7000**)

KHZ for KiloHertz contains frequencies transposed to higher frequencies.


MV for Molecular Weight, contains frequencies calculated from the Monoisotopic molecular mass of many molecules.

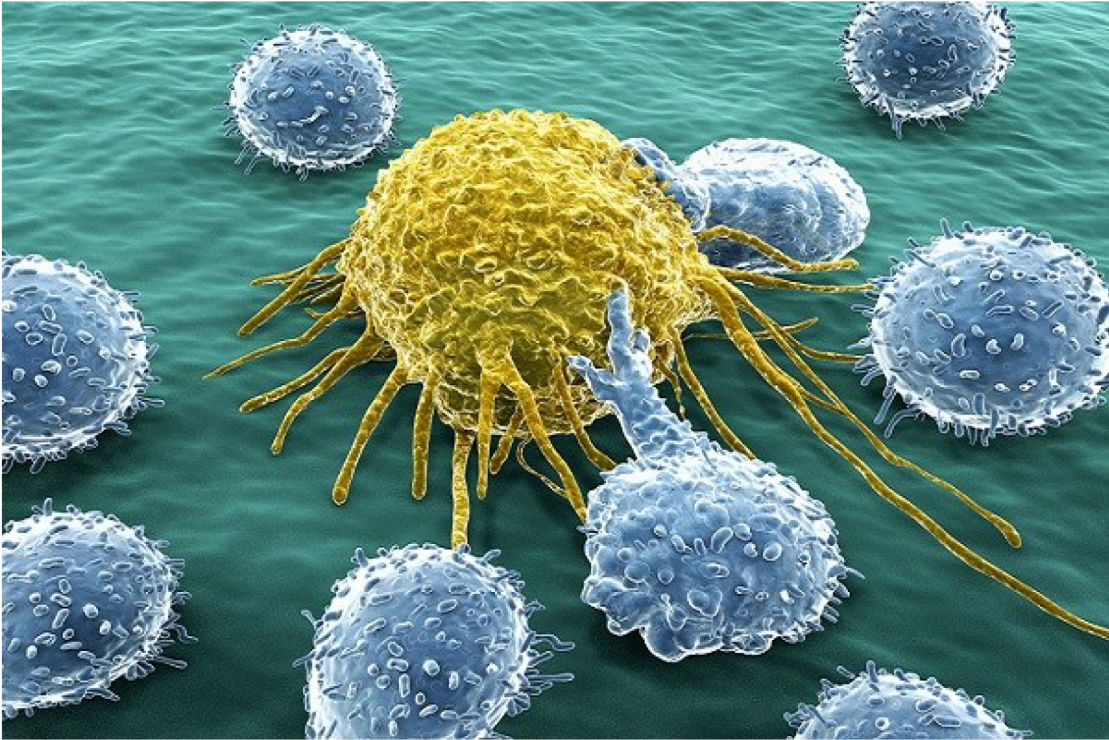
PROV for proven (validated), gives consistent results on each Subject on which it has been used.

RUSS contains programs extracted from various Russian databases.

RIFE contains the original frequencies of Dr. Rife



The following frequency sets are for remote treatment. In all treatments, irrespective of the type of cancer/tumor, continuously detoxing the body, supporting the organs, and stimulating the immune system is of the utmost importance.  **Orgo-Life®** Programs to do all of this.



Brain Tumors

You should assume from the beginning that the diagnosis made by doctors is wrong - I have yet to find one that is correct. From my experience, the following Programs are in the order most likely to work:

- 1. Cancer Astrocytoma (BIO):
857
- 2. Fibrosarcoma (XTRA): 1744
- 3. Cancer Droglioma (CAFL): 853
- 4. Cancer Neuroblastoma (CAFL): 878,1757,2635,3513,4392,5270,6148
Dwell: 180 (3 min each)
- 5. Cancer Glioblastoma Tremor (CAFL): 463,466,470

Dwell: 180 (3 min each)

6. Cancer Rhabdomyosarcoma Embryonal Vega 1 (CAFL): 2586,4445,5476

Dwell: 180 (3 min each)

7. Meningioma (CAFL): 446,535,537 Dwell: 180 (3 min each)

8. Cancer Gliomas (CAFL): 543,641,857 Dwell: 180 (3 min each)

Notes:

Programs containing one single frequency must be run continuously for about two hours daily.

The other programs must be run at least five times a day but not more than 10 times.

Remember that these are remote treatments - and the intensity must not be more than two volts. To use contact electrodes, halve the durations.

The larger the tumor the longer it will take to disappear. A 2cm by 2cm tumor will take about one month. Again this is for your entertainment purpose ONLY, (You must take a real treatment with your local Doctor by LAW)

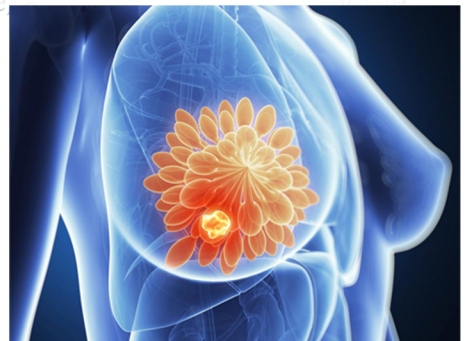
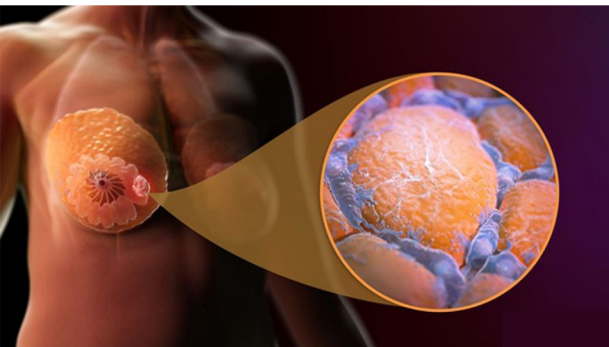
Tumors do not shrink faster by treating them for longer. They each have their own rate of shrinking. Treating for too long may result in brain inflammation, especially in young children.

We have found inflammation does occur to some extent when treating any brain tumor, so run Meningitis frequencies at least once after each treatment.

The MRI scan used for brain tumors is unable to distinguish between a tumor and scar tissue. When a tumor is removed, it leaves behind scar tissue - damage from that tumor. An MRI scan will detect this scar tissue, and the doctors will say the tumor is still there. Only a PET scan will differentiate between tumors and scar tissue. So ask for a PET scan to be done.

The Breast Cancer

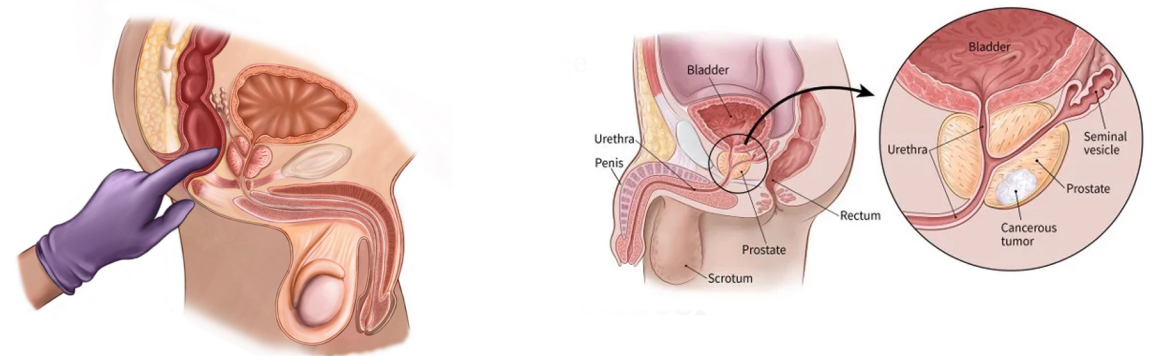
We have found Fibrosarcoma - 1744 - to work every time, without fail. Run it for about a week nonstop.



The biggest problem I encountered was the chemo pills given to women – these throw their hormonal balance into complete disarray by reducing the estrogen level. To get this in balance again is much more difficult than curing the cancer.

Note that doctors do a CA15-3 test to measure the progress of the cancer. This does not measure the tumor directly - it gauges the estrogen level which serves as a marker for the doctor to ascertain whether the tumor is worse or improved.

Doctors firmly believe that high estrogen creates breast tumors. To get the hormonal balance correct, one of the treatments is actually to boost the estrogen level. (Again this is for Entertainment purpose ONLY, you must refer to a Doctor for a proper treatment by LAW)

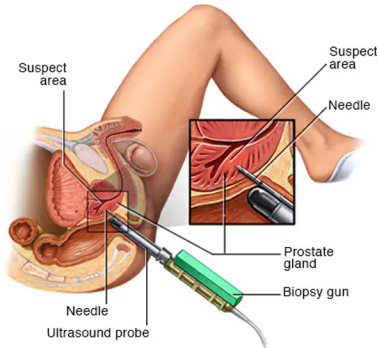
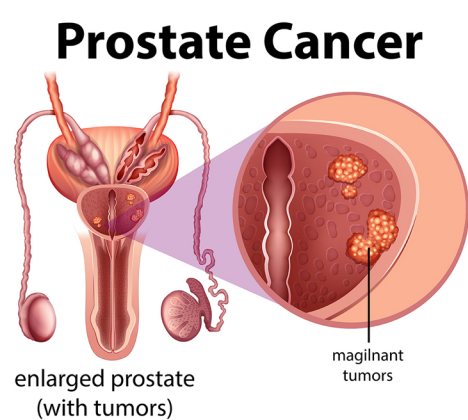


Prostate Cancer

This can be either true cancer or just something wrong with the gland that causes it to grow in size. Tania cannot see the difference. So start with the non-cancer. Programs as you should feel any improvement rather immediately. Then, if there is no improvement after, say, three days, go for the cancer Programs. (for wellness Only, a real treatment is only done by your local Doctor)

Non-Cancer

Prostate Enlarged (PROV): 2250, 2128, 2050, 920, 690, 666
Dwell: 180 (3 min each)
Prostate Problems General (PROV):
2720, 2128, 2008, 880, 802, 787, 728, 727, 690, 666, 465, 408, 125, 95, 72, 20, 9
Dwell: 180 (3 min each)



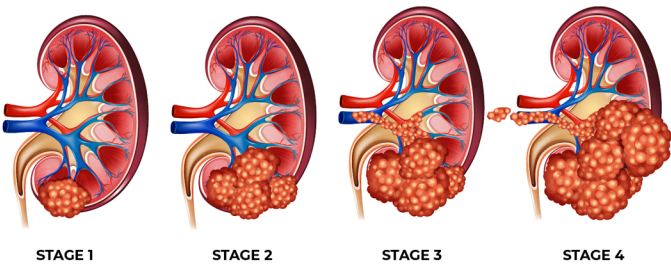
Cancer

Run the following programs:
Cancer Prostate (PROV):
20, 72, 304, 442, 666, 690, 727, 766, 787, 790, 800, 920, 1875, 1998, 2008, 2050, 2120, 2127, 2128, 2130, 2217, 2250, 2720, 5000
Dwell 180 (3 min each)

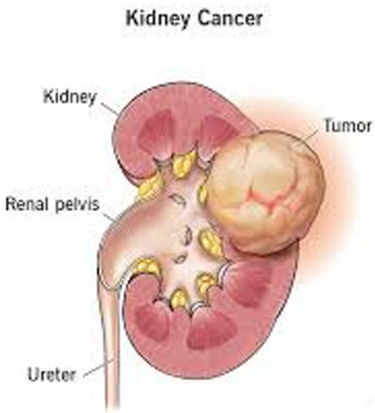
Prostate Adenominum (PROV): 442,688,1875,748,766,920
Dwell: 240 (4 min each)
Jade Machine Color Code Orange (CAFL): 920 Dwell: 300 (5 min)
Breast Tumors (XTRA): 727, 787, 880, 2008, 2127, 5000
Dwell: 180 (3 min each)
Run the four sets above every day for a week, and in between run:

Immune System Stimulation 3 (PROV):
8, 20, 120, 304, 432, 464, 665, 728, 800, 880, 1488, 1862, 2008, 2128, 2180, 2489, 2720,
2 791, 2855, 2867, 2929, 3176, 3347, 3448, 4014, 5000, 5611, 10000
Dwell: 240 (4 min each)

Doctors make use of the PSA test which has now been proven to be unreliable, but is still being used. This test has caused lots of problems, leading some men to believe they have prostate cancer when they do not. So please do not take this test result seriously. Go for a physical examination instead. *Remember to always refer a real treatment to your local Doctor, this is by Law.*



KIDNEY CANCER

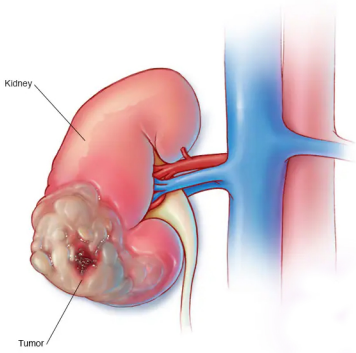
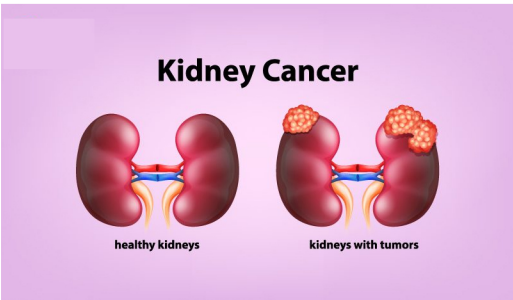


Adrenal and Kidney Cancer

It is normally believed that this is an adrenal gland tumor, but because this gland sits on top of the kidney, the kidney will most likely also be involved. I have had just had one case of this, so it is still open for other treatments. Run:
Kidney Papilloma (PROV): 110, 148, 264, 634, 767, 848, 917, 760, 762, 1102
Dwell: 180 (3 min each)

Run the above Program about 10 times consecutively for about 3 days. In the case I dealt with, a CT scan showed the tumor in the adrenal gland. But Tania saw it as being partly in the kidney and partly in the adrenal. If she had not seen this, I would never have investigated the kidney direction, and would not have found the correct Program. I tried the adrenal gland direction and only found Cancer Adenoma - which did not work. *Remember to always refer a real treatment to your local Doctor, this is by Law.*

I then tried Non Hodgkins and it removed the adrenal tumor. The adrenal gland is part of the lymph system, and this is the reason it worked. It made the lymph.



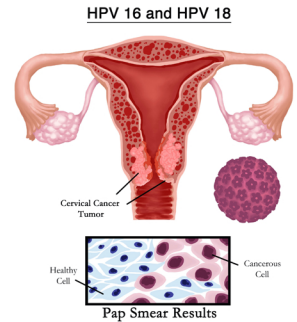
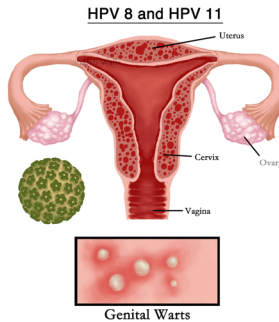
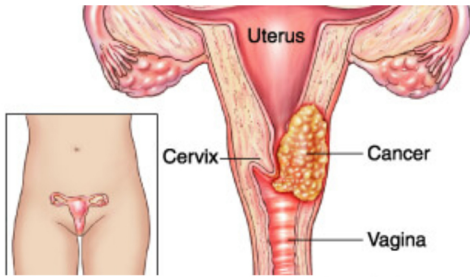
Kidney Tumors.

From this I conclude that Papilloma may be at the root of many tumors. When you see Papilloma, you normally think of warts - well, that's what I thought of when I saw this.

Papillomavirus (PROV):

67265, 64734, 16970, 9609, 9258, 5657, 1051, 1011, 907, 874, 767, 489, 466, 404, 265, 110, 45. Dwell: 240 (4 min each)

After this, there still remained a very thin tumor in the lungs that did not respond to Fibrosis of the Lung nor to Kidney Papilloma. I tried Asbestos lung - 5111 Hertz - and that removed the last bit of this tumor. **Always remember to refer a real treatment only with your local Doctor, it is like this Law.**



Non Hodgkins Lymphoma

Cancer Non Hodgkins 1 (PROV):

574, 588, 666, 778, 1078, 1120, 1340, 1744, 3524, 3713

Dwell: 180 (3 min each)

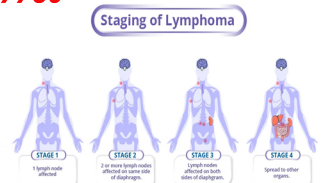
Cancer Non Hodgkins 2 (PROV): 2008, 2004, 2012, 2116, 2128, 3672, 7760

Dwell: 180 (3 min each)

Staphylococcus (XTRA):

563, 611, 727 Dwell: 360 (6 min each)

Lymph Support (CAFL): 15.05, 10.36, 3176 Dwell: 360 (6 min each)



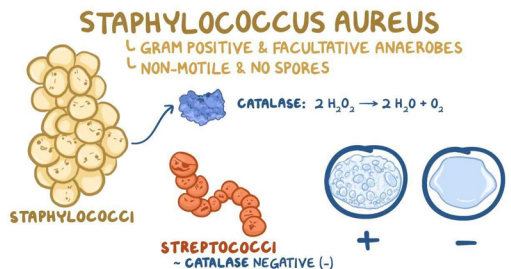
Lymphs and Detox (PROV):

10000, 3177, 3176, 3175, 880, 787, 751, 727, 676, 635, 625, 522, 465, 444, 440, 304, 148, 146, 15.2, 15.05, 10.36, 10, 7.83, 6.3, 2.5

Dwell: 180 (3 min each)



For your Feet Detox
with OH-8803 Magickey Teknik®



Breast Tumors (XTRA):

727, 787, 880, 2008, 2127, 5000 , Dwell: 180 (3 min each)

Immune System Stimulation 3 (PROV):

8, 20, 120, 304, 432, 464, 665, 728, 800, 880, 1488, 1862, 2008, 2128, 2180, 2489, 2720, 2791, 2855, 2867, 2929, 3176, 3347, 3448, 4014, 5000, 5611, 10000

Always remember to refer a real treatment only with your local Doctor, it is like this Law.

Dwell: 240 (4 min each)

Detox 4 Toxins Throughout the Body (CAFL):

2.4, 5.8, 6.3, 7.8, 20, 26, 35, 60, 72, 125, 165, 200, 444, 465, 522, 588, 600, 625, 650, 666, 685, 690, 727, 760, 776, 787, 802, 832, 880, 1250, 1500, 1550, 1850, 2127 Dwell: 90 (1 min 30 sec each)

Testicle Tumor

Cells of Leydig (CAFL): 2500 Dwell: 480 (8 min)
Seminal Vesiculitis (XTRA): 393, 433, 712 Dwell: 180 (3 min each)
Run for 7 days nonstop. *Always refer to your doctor, as this is the only way to treat your illness, This is the Law.*

Cancer for which there are no specific frequencies:

(Note this is true for all cancers).

Cancer Basic 1 (CAFL):

588.2, 666, 690, 727, 1250, 2008, 2127, 2128
Dwell: 240 (4 min each)

Cancer basic 2 (CAFL):

120, 464, 524, 666, 728, 800, 854, 880, 2008, 2048, 2084, 2128, 2184, 2452, 2720, 3040, 3176, 5000, 6064, 10000
Dwell: 180 (3 min each)

Cancer Basic 4 (XTRA):

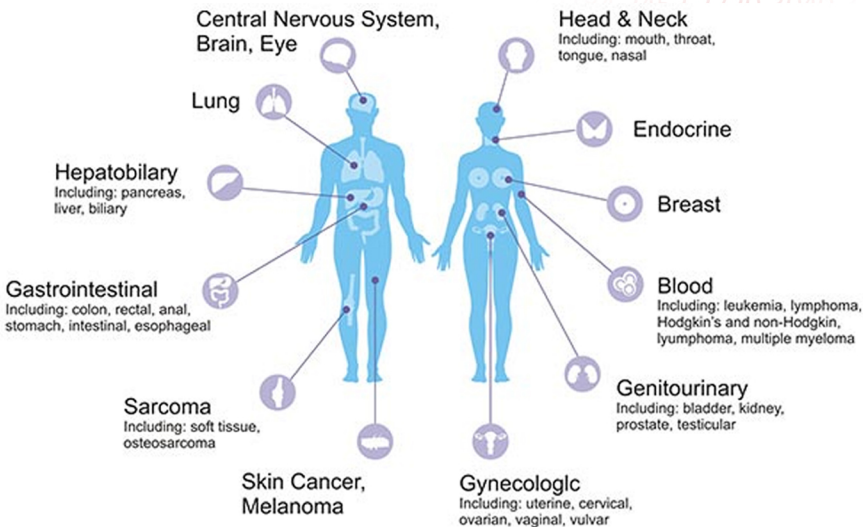
120, 464, 524, 666, 728, 784, 800, 854, 880, 2008, 2084, 2184, 2452, 2720, 3040, 3176, 5000, 6064, 10000
Dwell: 240 (4 min each)

Cancer general 1 (CAFL):

10000, 5000, 3176, 2720, 2489, 2189, 2184, 2128, 2084, 2050, 2008, 880, 854, 800, 784, 728, 666, 524, 464, 333, 304, 120
Dwell: 180 (3 min each)

Cancer general 2 (CAFL):

10000, 3176, 3176, 3040, 2720, 2489, 2182, 2127, 2048, 2008, 1862, 1552, 880, 802,



786, 727, 665, 664, 465, 304, 125, 96, 72, 64, 20

Dwell: 180 (3 min each)

Cancer General 3 (CAFL):

10000, 3176, 2720, 2489, 2180, 2128, 2049, 2008, 1865, 943, 886, 866, 776, 732, 728, 690, 676, 650, 523, 442, 414, 304, 240, 128

Dwell: 180 (3 min each)

BX Virus 1 (XTRA): 1

604, 2008, 2128, 2790, 2876, 3713, 11503

Dwell: 240 (4 min each)

Alternate the above with:

BY Virus 3 (XTRA):

2008, 2128, 3524, 11430, 11780, 17034, 20080

Dwell: 240 (4 min each)

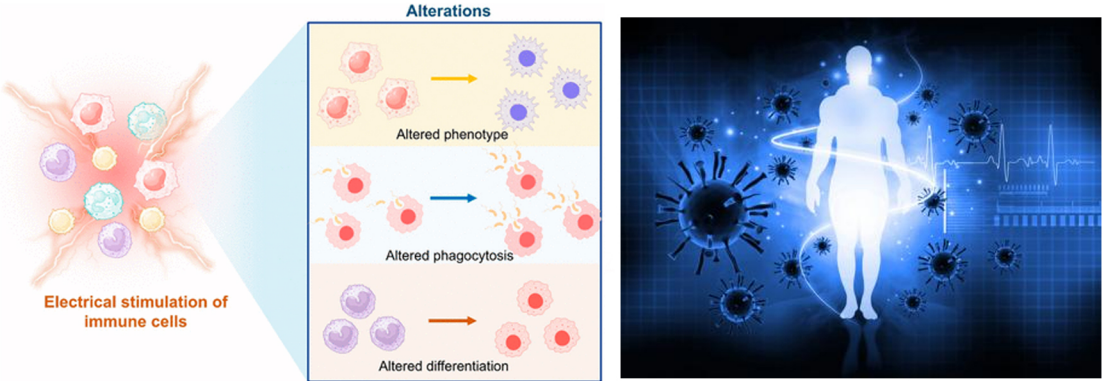
Immune system stimulation 3 (PROV):

8, 20, 120, 304, 432, 464, 665, 728, 800, 880, 1488, 1862, 200, 2128, 2180, 2489, 2720, 2791, 2855, 2867, 2929, 3176, 3347, 3448, 4014, 5000, 5611, 10000

Dwell: 240 (4 min each)

Breast Tumors (XTRA):

727, 787, 880, 2008, 2127, 5000 Dwell: 180 (3 min each)



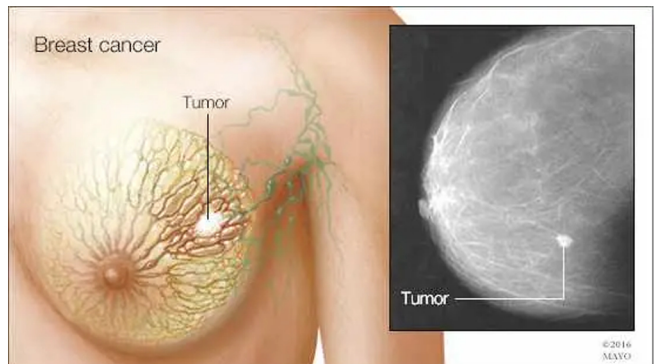
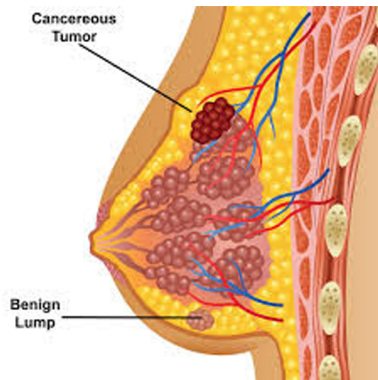
Detox 4 Toxins Throughout the Body (CAFL):

2.4, 5.8, 6.3, 7.8, 20, 26, 35, 60, 72, 125, 165, 200, 444, 465, 522, 588, 600, 625, 650, 666, 685, 690, 727, 760, 776, 787, 802, 832, 880, 1250, 1500, 1550, 1850, 2127

Dwell: 90 (1 min 30 sec each)

Have any questions or thoughts about these Rife frequencies? We'd love to see your comments below!

And remember always use a Doctor for any medical treatment of any illness, it is the Law.





Outils Utilisés en Sujok et pour le **MagicKey Teknik®**



Des outils et instruments de qualité supérieure fabriqués par **Universal Life Force Energy®**. Pour voir la fiche technique complète de tous nos items, visiter notre site web: www.SujokAcademy.club

CODE PRODUIT: #OH-5010

Rouleau MAGICKEY® facial / simple couleur argent, incl. sac de rangement, pour le système des points de correspondance du visage en Su Jok et la MAGICKEY® TEKNIK®



Outils de gestion de stress:



CODE PRODUIT: #OH-5185

Gratte Langue MAGICKEY®, fait de cuivre pure à 99.99%, pour traiter et nettoyer sa langue de façon énergétique. La langue comporte un est un hologramme complet de notre corps.

CODE PRODUIT: #OH-5187

Cure oreille MAGICKEY®, bâton pour le nettoyage des oreilles, de couleur jaune, tige faite de brass pure à 99.99%. Les Oreilles comporte un est un hologramme complet de notre corps.



CODE PRODUIT: #OH-5264

EDITION PRO; Kit de grains 11; sarrasin, poivre noir, adzuki, fèves mangue, felu grecque, canari, fenouille, de moutarde, chardon de marie, cumin, MAGICKEY® pour la thérapie Su Jok des grains de haute qualité et tous biologique et sélectionné spécialement pour la thérapie des grains. Accessoires spéciales; 10 petites étoiles magnétiques et 10 grandes étoiles magnétiques, 10 étoiles métalliques large Gold, 10 étoiles métalliques, avec contenant plastique et LIVRET explicatif sur les propriétés de chacun des grains. Pour l'acupuncture en Su Jok et la MAGICKEY® TEKNIK®.



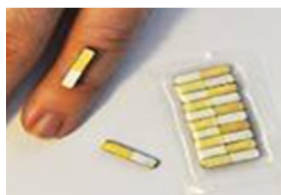
CODE PRODUIT: #OH-5265

Aimants Grand MAGICKEY® avec forme d'étoile, format en billes pour la circulation de l'énergie des méridiens, 10 mcx. Par paquets. Pour l'acupuncture en Su Jok et la MAGICKEY® TEKNIK®.



CODE PRODUIT: #OH-5275

Aimants pour la thérapie en Sujok et MAGICKEY TEKNIK®, idéal pour faire circuler les méridiens en Su Jok et la MAGICKEY® TEKNIK®. Vendu en paquets de 10 mcx. Fait en longueur en respectant le + et -.



CODE PRODUIT: #OH-5280

Mini Moxa AUTO-COLLANT/ 50mcx / Paquet. Pour les points de correspondance des méridiens en Sujok et la MAGICKEY® TEKNIK®



CODE PRODUIT: #OH-5285

Petites Etoiles MAGICKEY® GOLD pour les points de correspondance en Su Jok, Kit de 20 mcx assorties petit & grand assorties de couleur GOLD. Pour l'acupuncture en Su Jok et la MAGICKEY® TEKNIK®.



"Pour une Meilleure

Santé Globale!"

**ORIGINAL-
HEALTH.NET**
"For a Better Global
Health!"



Pour toute informations SVP appeler le
(514) 800-8693

www.Original-Health.net

*L'Équipe de la Magickey Teknik®
Académie du Canada*

www.Orgo-Life.com